

# Merkur<sup>®</sup> Piston Rod Assembly Kit

313519B

EN

**For replacing the Piston Rod Assembly on Merkur Displacement Pumps. For professional use only.**



### Important Safety Instructions

Read all warnings and instructions in this manual and in manuals 312792 and 312794. Save all instructions.

### Kit 24A643

For LW025A Merkur Displacement Pump

### Kit 24A644

For LW050A Merkur Displacement Pump

### Kit 24A645

For LW075A Merkur Displacement Pump

### Kit 24A646

For LW100A Merkur Displacement Pump

### Kit 24A647

For LW125A Merkur Displacement Pump

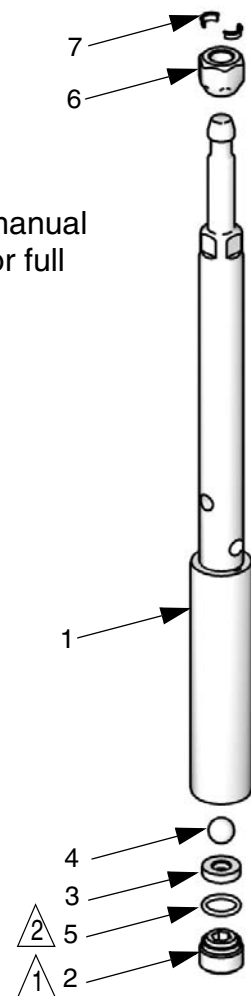
### Kit 24A648

For LW150A Merkur Displacement Pump

See your displacement pump manual and pump assembly manual for full installation instructions.

1 Torque varies by lower size.  
LW025A-LW050A: 58-62 ft-lb  
(78-84 N•m)  
LW075A-LW150A: 78-82 ft-lb  
(105-111 N•m)

2 Lubricate.



## Parts Included

| Ref. | Description         | Qty. |
|------|---------------------|------|
| 1    | PISTON/ROD ASSEMBLY | 1    |
| 2    | NUT, flow-through   | 1    |
| 3    | SEAT, carbide       | 1    |
| 4    | BALL, check         | 1    |
| 5    | O-RING              | 1    |
| 6    | NUT, coupling       | 1    |
| 7    | COLLARS, coupling   | 2    |

*All written and visual data contained in this document reflects the latest product information available at the time of publication.  
Graco reserves the right to make changes at any time without notice.*

Original instructions. This manual contains English. MM 313519

**Graco Headquarters:** Minneapolis

**International Offices:** Belgium, China, Japan, Korea

**GRACO INC. AND SUBSIDIARIES • P.O. BOX 1441 • MINNEAPOLIS MN 55440-1441 • USA**

**Copyright 2008, Graco Inc. All Graco manufacturing locations are registered to ISO 9001.**

[www.graco.com](http://www.graco.com)  
Revised 12/2011